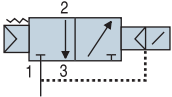
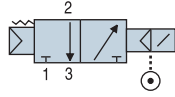




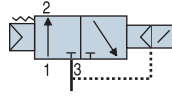
**NC vacuum supplied servo**  
**3: Exhaust**  
**2: Use**  
**1: Pump**



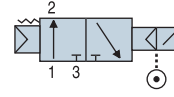
**NC C.A. supplied servo**  
**3: Exhaust**  
**2: Use**  
**1: Pump**



**NO vacuum supplied servo**  
**3: Exhaust**  
**2: Use**  
**1: Pump**

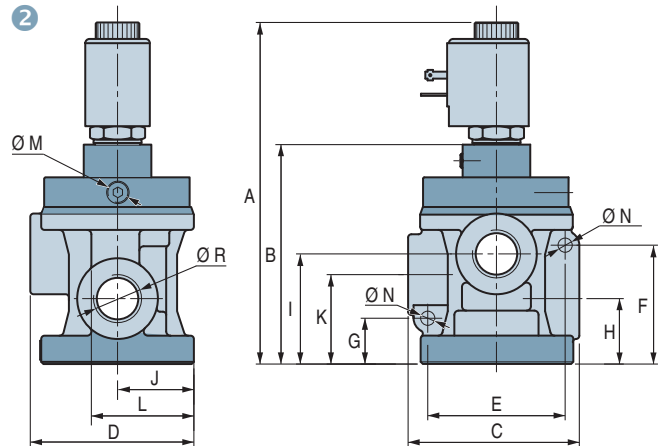
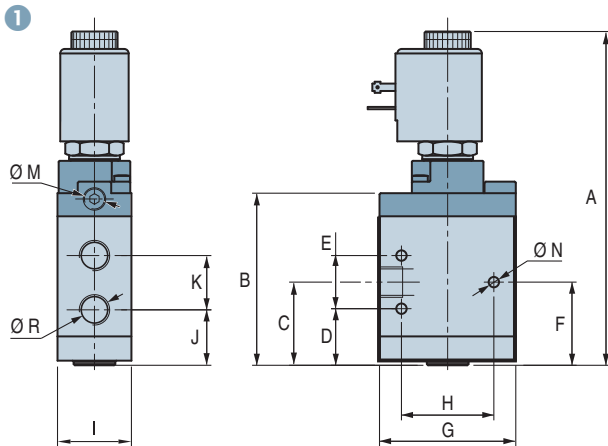


**NO C.A. supplied servo**  
**3: Exhaust**  
**2: Use**  
**1: Pump**



### Characteristics and Dimensions

Ref. NO C.A. servo	Ref. NC C.A. servo	Ref. NO Vacuum servo	Ref. NC Vacuum servo	Ø R	Diagram	A	B	C	D	E	F	G	H	I	J	K	L	Ø M	Ø N
AG 3002	AG 3001	-	-	G1/8"-F	1	102	48.5	16	5.3	-	15.8	36	28	25	7	17.5	-	M5-F	4.5
AG 3010	AG 3009	AG 3211	AG 3210	G1/4"-F	1	140.5	74	36	24.5	23	35.5	59	40	32	24	22.5	-	G1/8"-F	4.5
AG 3012	AG 3011	AG 3215	AG 3214	G3/8"-F	1	140.5	74	36	24.5	23	35.5	59	40	32	24	22.5	-	G1/8"-F	4.5
AG 3021	AG 3020	AG 3223	AG 3222	G1/2"-F	2	154	100	78.5	75	63	54.5	21	30	50.5	35	41	47	G1/8"-F	6.4
AG 3041	AG 3040	AG 3233	AG 3232	G3/4"-F	2	154	100	78.5	75	63	54.5	21	30	50.5	35	41	47	G1/8"-F	6.4
AG 3051	AG 3050	AG 3243	AG 3242	G1"-F	2	175	115	101	89	76	62.5	25.5	38	64	40	51	55	G1/8"-F	8.4
AG 3063	AG 3062	AG 3257	AG 3256	G1"1/2"-F	2	245.5	150	158	138	113.5	113	34	68	96	59	68	85	G1/8"-F	11



### Specifications

<b>Fluid</b>	Non-lubricated 50 micron filtered air. If lubrication is used it must be uninterrupted	
<b>Maximum vacuum</b>	97 %	
<b>Operating temperature</b>	-4 to 104 °F	
<b>Fluid temperature</b>	max 104 °F	
<b>Dynamic seal</b>	polyurethane	
<b>Static seal</b>	NBR	
<b>Coil power</b>	11 VA	10 VA
<b>Voltage</b>	12 VDC / 24 VDC	24 VAC / 110 VAC / 220 VAC
<b>Minimum vacuum for vacuum supplied servo</b>	20 %	-

### Flow Rate

Fitting	G1/8"	G1/4"	G3/8"	G1/2"	G3/4"	G1"	G1"1/2"
Nominal diameter [mm]	5.5	8	10	15	19	25	39
Flow rate [m³/h]	1.5	4	10	20	35	90	180
Response time (activation) <sup>(1)</sup>	15	18	18	20	20	20	60
Response time (deactivation) <sup>(1)</sup>	25	28	28	40	40	45	40
Minimum control pressure (bar) for C.A. servo	1.5	2.5	2.5	3	3	3	4

(1) with monostable electrical control

Note: All dimensions are in mm

### Voltage code

Code	E1	E2	E3	E4	E5	E7
<b>Voltage</b>	24 VDC	220 VAC	24 VAC	110 VAC	48 VAC	12 VDC



**For all orders, please specify:**  
**Model + Voltage**  
**e.g.: AG3215E1**