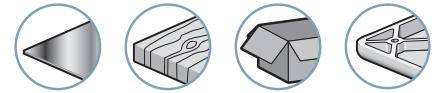


GVR 09, 10, 12, 14

Micro Ejectors



Industry-specific applications



The GVR range is designed for an industrial environment:

- Compact
- Lightweight
- Optimized technical characteristics
- Pollution-resistant with its through-type silencer (SILK 18C)
- Easily integrated onto vacuum gripper
- Pass-through mounting using M10 screws (GVR09)

Advantages

- Adaptable to all industries
- Lightweight and compact
- Reduced gripping time
- Direct installation on suction cups
- Excellent mechanical resistance
- Blow-off option
- No clogging
- Silent operation

Characteristics

Models	Ø nozzle	Air consumed (SCFM)	Maximum vacuum (%)	Air drawn in (SCFM)	At air pressure (bar)
GVR 09	0.9	1.27	85	0.74	5
GVR 10	1	1.55	85	0.95	5
GVR 12	1.2	2.37	85	1.59	5
GVR 14	1.4	3.81	85	2.26	5

Note: All dimensions are in mm

Evacuation Time in Seconds per Liter

% vacuum	10 %	20 %	30 %	40 %	50 %	60 %	70 %	80 %	85 %
GVR 09	0.31	0.65	1.05	1.52	2.09	2.85	3.87	5.7	7.34
GVR 10	0.24	0.51	0.82	1.18	1.62	2.21	3.01	4.43	5.71
GVR 12	0.14	0.3	0.49	0.71	0.97	1.33	1.81	2.66	3.42
GVR 14	0.1	0.21	0.34	0.5	0.68	0.93	1.27	1.85	2.44

Specifications

Supply	Non-lubricated filtered air, pressure 2 to 6 bar
Optimum operating pressure	5 bar
Weight	40 g
Material	2017A - Cu Zn
Temperature	32 to 176 °F.



When ordering, please specify:
Model + Nozzle diameter + Silencer
e.g.: GVR12K

1: Model	2: Ø nozzle	3: Silencer	
GVR	09	Ø 0.9 mm	- Without
	10	Ø 1 mm	S SILGV 10
	12	Ø 1.2 mm	K SILK 18 C ⁽¹⁾
	14	Ø 1.4 mm	

(1) SILK 18 C through-type silencer dimensions, see page 11/11.

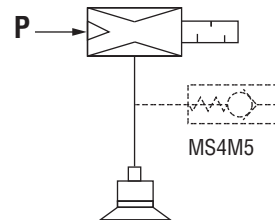
Additional Information

As standard

- Vacuum switch or blow-off switch with SILGV 10. SILK18C silencer (through-type) on request.

Optional

- MS2M5 or MS4M5 blow-off valves with non-return valve on vacuum (see page 11/4).



GVR 09, 10, 12, 14

GVR 09, 10, 12, 14

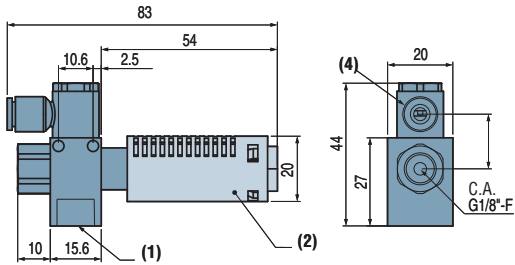
Micro Ejectors

Dimensions and Data Curves

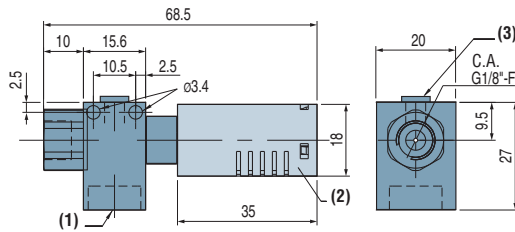


Dimensions

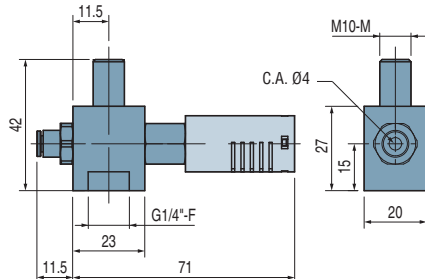
GVR 10, 12, 14 + MS4M5



GVR 10, 12, 14

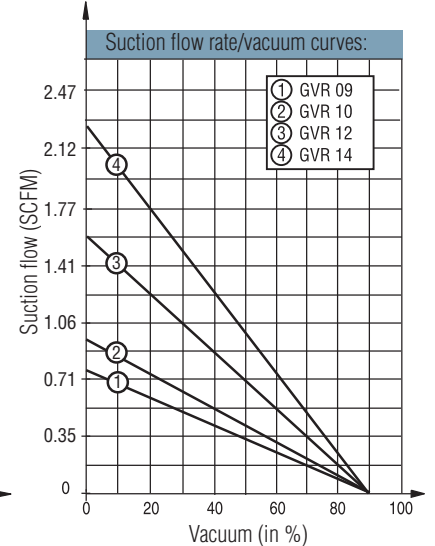
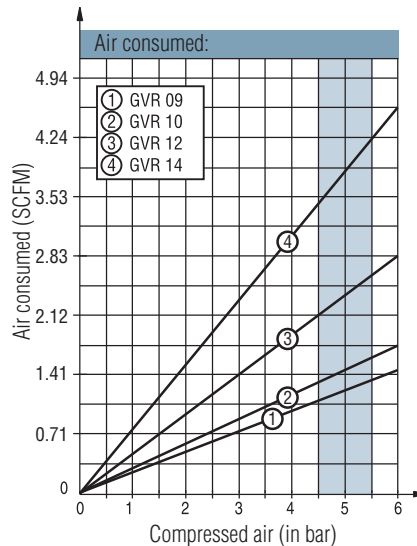
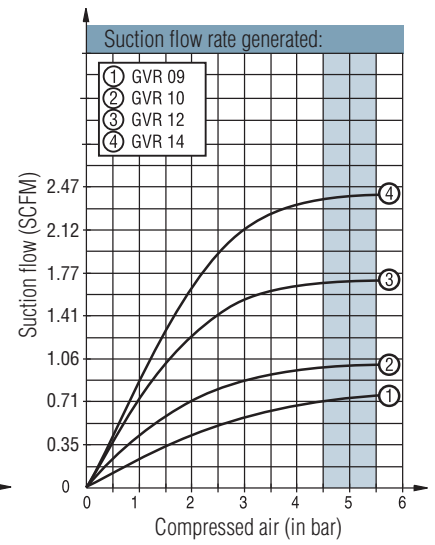
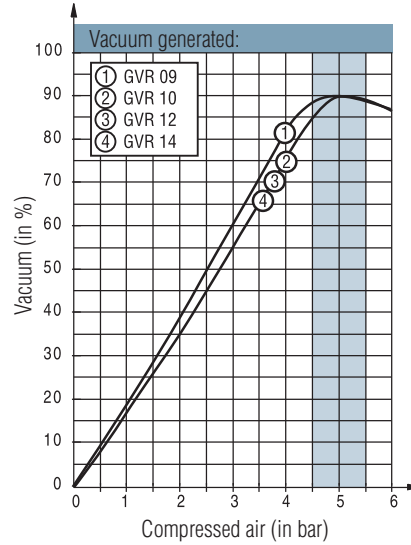


GVR 09



- (1) Vacuum G1/4"-F
- (2) Silencer
- (3) M5-F plug for vacuum switch
- (4) Push fitting, outside Ø 6

Data Curves



Note: All dimensions are in mm