


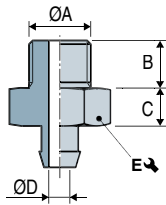




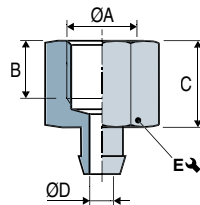
### Choice of Fittings

	Male fittings				Female fittings	
	G1/8"-M	G1/4"-M	M5-M	M6-M	G1/8"-F	G1/4"-F
VPA 15	IM11A	-	IM21	IM22	IF10A	-
VPA 20	IM11A	-	IM21	IM22	IF10A	-
VPA 25	IM11A	-	IM21	IM22	IF10A	-
VPA 26	-	-	-	-	-	-
VPA 30	-	IM51SP143	IM5VPA30	-	-	IF50SP143
VPA 35 A	-	IM51SP143	IM5VPA30	-	-	IF50SP143
VPA 40	-	IM41SP477	-	-	-	IF40SP477
VPA 25000	-	-	-	-	-	-
VPA 25001	IM11ASP082	-	-	-	IF10ASP082	-

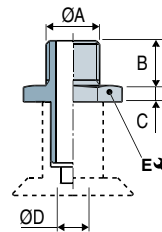
Male fittings  
VPA 15...25



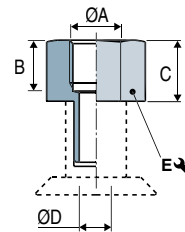
Female fittings  
VPA 15...25



Male fittings  
VPA 30...40



Female fittings  
VPA 30...40



### Barbed Fittings

Model	ØA	B	C	ØD	E ↘	Materials	⚖ (g)
IM 11 A	G1/8"-M	7.5	6	3.5	14	Aluminum	4.1
IM 11 A SP082	G1/8"-M	7.5	6	3.5	14	Aluminum	4.1
IM 21 <sup>(1)</sup>	M5-M	4.5	5	2.5	7	Nickel-plated brass	3.1
IM 22 <sup>(1)</sup>	M6-M	5	5	3.5	7	Nickel-plated brass	2.7
IM 41 SP477	G1/4"-M	11	4	44	17	Aluminum	7.5
IM 51 SP143	G1/4"-M	11	6	8	21	Aluminum	10.5
IM 5 VPA30	M5-M	5	3	2.5	13	Aluminum	5.7
IF 10 A	G1/8"-F	8	12	3.5	14	Aluminum	4
IF 10 A SP082	G1/8"-F	8	12	3.5	14	Aluminum	4
IF 50 SP143	G1/4"-F	10	15	8	21	Aluminum	14.4
IF 40 SP477	G1/4"-F	10	15	4.4	17	Aluminum	8

(1) Flow control nozzle available: orifice calibrated to reduce the leakage in case of use of a multi-cup gripper (refer to page 4/9)