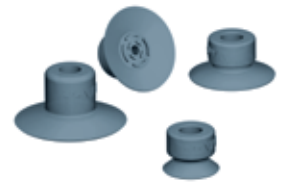


VPAL

Suction Cups for Labels



Thanks to their extra-flat shape and great lip flexibility, the VPAL suction cups are especially adapted for gripping and handling IML labels or flexible materials. They are made of silicone to meet food compatibility standards (FDA and CE 1935/2004).

Industry-specific applications





Types of use



Materials

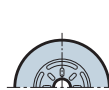
SIBL5 Blue Silicone 50 Shore

Suction Cup Characteristics

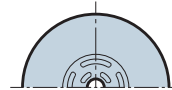
	Ø (mm)	 (lbf) ⁽¹⁾	SIBL5
VPAL 10	10	0.65	VPAL10SIBL5
VPAL 15	15.5	0.97	VPAL15SIBL5
VPAL 20	20	1.46	VPAL20SIBL5

(1) Actual force of the suction cup with 65% vacuum and a safety factor of 2 included.

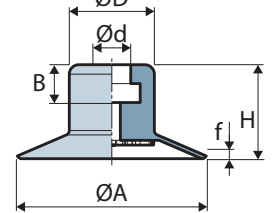
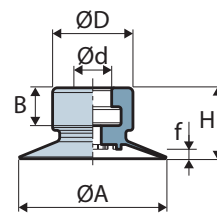
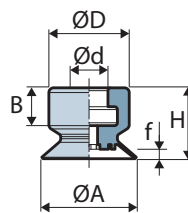
VPAL10




VPAL15



VPAL20




Suction Cup Dimensions

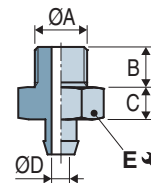
	ØA	H	Ød	ØD	f ⁽²⁾	B
VPAL 10	10	7.5	4	8.5	1.5	4
VPAL 15	15.5	7.5	4	8.5	1.5	4
VPAL 20	20	9.9	4	9	1.4	4

(2) f = Deflection of the suction cup.

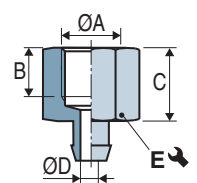
Choice of Fittings

	Male fittings		Female fittings	
	G1/8"-M	M5-M	G1/8"-F	M5-F
VPAL 10	IM18VPG5	IM5VPG5	IF18VPG5	IF5VPG5
VPAL 15	IM18VPG5	IM5VPG5	IF18VPG5	IF5VPG5
VPAL 20	IM18VPG5	IM5VPG5	IF18VPG5	IF5VPG5



Male fittings
VPAL 10...20



Female fittings
VPAL 10...20



Barbed Fittings

Model	ØA	B	C	ØD	E 	Materials	 (g)
IM 5 VPG 5	M5-M	4.5	3.5	2.2	7	Aluminum	0.7
IM 18 VPG 5	G1/8"-M	8	5	2.2	14	Aluminum	3.9
IF 5 VPG 5	M5-F	6	9	2.2	8	Aluminum	1.2
IF 18 VPG 5	G1/8"-M	9	15	2.2	14	Aluminum	5.1

The values represent the average characteristics of our products.
Note: All dimensions are in mm

Accessories

To optimize the use of your suction cups, Coval offers a comprehensive range of accessories (nozzle fittings, spring extensions, and feeder systems, etc.), see chapters 4 and 14.



Specify the part number e.g.: **VPAL15SIBL5**
Please refer to the characteristics table above